

BARREL RIGHT STR. 53					
MARK	QUANTITY	SIZE	SHAPE	VARIABLE LENGTH	LENGTH
E1	22*	4	STR.	12'-6" TO 19'-2"	(AVG) 15'-10"
E2L	24	4	STR.		19'-2"
E2S	24	4	STR.		12'-10"
E3	22	4	STR.		4'-10"
E4L	4	4	STR.		14'-8"
E4S	4	4	STR.		8'-8"
E5	22	4	STR.	8'-4" TO 15'-0"	(AVG) 11'-8"
A1	48	4	STR.		11'-6"
A2	26	4	STR.		11'-6"
A3	22*	6	STR.	2'-0" TO 10'-8"	(AVG) 6'-4"
A4	12**	4	STR.	2'-0" TO 10'-8"	(AVG) 6'-4"
B1	60	6	BNT.		5'-6"
B2	14	6	BNT.		11'-6"
B3	60	6	BNT.		14'-6"
C1	34	5	STR.		2'-8"
C2	8	5	STR.		8'-10"
C3	26	5	STR.		11'-10"

\* TWO SETS OF 11  
 \*\* TWO SETS OF 6

CURTAIN WALL SIDE RIGHT STR. 53				
MARK	QUANTITY	SIZE	SHAPE	LENGTH
CH1	10	4	STR.	43'-4"
CV1	46	5	BNT.	6'-10"
CV2	46	5	BNT.	8'-2"
CV3	4	5	BNT.	7'-1"

BAR LIST FOR TWO CURBS SEE BC-6S2				
MARK	QUANTITY	SIZE	SHAPE	LENGTH
CH1	4	6	STR.	16'-9"
CH2	12	6	STR.	13'-5"

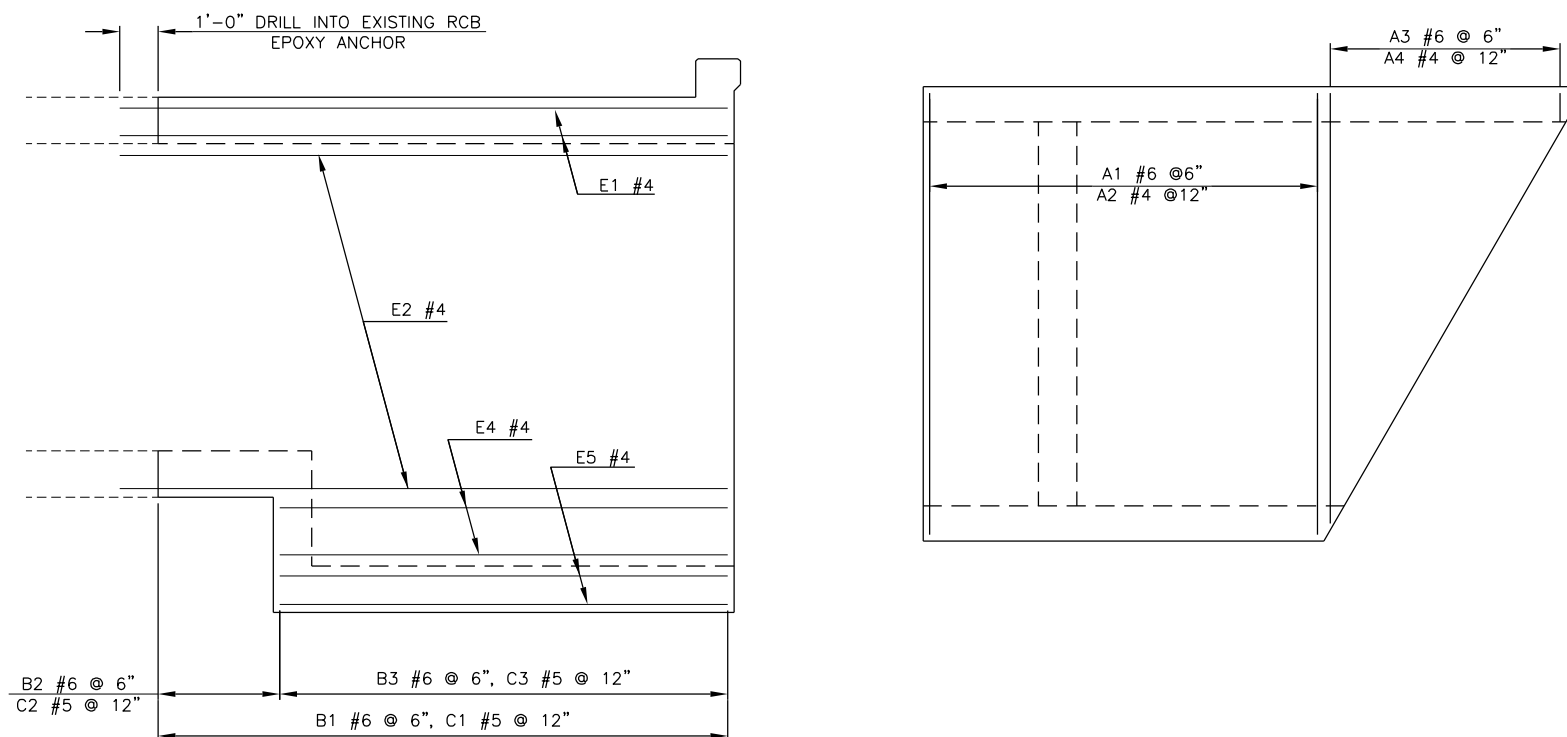
BARREL DROP SIDE RIGHT STR. 53				
MARK	QUANTITY	SIZE	SHAPE	LENGTH
DR1	6	6	STR.	11'-6"
DR2	22	4	BNT.	6'-9"

SHORT WING SIDE RIGHT STR. 53					
MARK	QUANTITY	SIZE	SHAPE	VARIABLE LENGTH	LENGTH
SH1	4	4	BNT.		18'-0"
SH2	9	4	BNT.	3'-2" TO 17'-1"	(AVG) 10-1 1/2"
SH3	4	4	BNT.		18' - 3"
SH4	4	4	BNT.	3'-8" TO 17'-8"	(AVG) 10'-8"
SV1	2	5	STR.		12'-4"
SV2	13	5	STR.	6'-11" TO 12'-0"	(AVG ) 9'-4 1/2"
SV3	7	5	BNT.	7'-1" TO 9'-5"	(AVG ) 8'-3"
SV4	2	4	STR.		12'-4"
SV5	9	4	STR.	7'-2" TO 11'-9"	(AVG) 9'-5 1/2"
SV6	6	4	STR.	4'-8" TO 7'-8"	(AVG) 6'-2"
SA1	15	7	BNT.		6'-0"
SA2	11	4	STR.		2'-9"
ST1	2	4	STR.		17'-6"

LONG WING SIDE RIGHT STR. 53					
MARK	QUANTITY	SIZE	SHAPE	VARIABLE LENGTH	LENGTH
LH1	8	4	BNT.		29'-8"
LH2	18	4	BNT.	4'-2" TO 28'-4"	(AVG) 16"-3"
LV1	3	5	STR.		12'-4"
LV2	24	5	STR.	6'-7" TO 12'-3"	(AVG) 9'-5"
LV3	12	5	BNT	6'-10" TO 9'-6"	(AVG) 8'-2"
LV4	3	4	STR.		12'-4"
LV5	16	4	STR.	7'-2" TO 12'-1"	(AVG) 9'-7 1/2"
LV6	10	4	STR.	4'-8" TO 7'-8"	(AVG) 6'-2"
LA1	27	7	BNT		6'-0"
LA2	19	4	STR.		2'-9"
LT1	2	4	STR.		27'-7"

APRON SIDE RIGHT STR. 53					
MARK	QUANTITY	SIZE	SHAPE	VARIABLE LENGTH	LENGTH
AP1	24	4	STR.		15'-9"
AP2	48	4	STR.	1'-7" TO 15'-2"	(AVG) 8'-4 1/2"
AP3	14	4	STR.	3'-2" TO 13'-7"	(AVG) 8'-4 1/2"
AP4	26	4	STR.	16'-2" TO 43'-11"	(AVG) 30'-0 1/2"
AP5	4	4	STR.		45'-4"

**BAR BEND DETAILS**



**BARREL STEEL LAYOUT - 1**

**BARREL STEEL LAYOUT - 2**

BASIS OF PAYMENT STRUCTURE NO. 53					
DESCRIPTION	CLASS AA CONCRETE (CUBIC YARDS)	REINFORCING STEEL (POUNDS)	STRUCTURAL EXC. (CUBIC YARDS)	UNCLASSIFIED EXC. (CUBIC YARDS)	CLSM (CUBIC YARDS)
SIDE RIGHT	74.0	9,584	18.0	234.0	
SIDE LEFT (BC-65 )	42.0	3,190	14.0	367.0	
TOTALS	116.0	12,774	32.0	601.0	10***

\*\*\* TO BE USED AS DIRECTED BY ENGINEER IF VOIDS ARE ENCOUNTERED BENEATH EXISTING STRUCTURE.

FILENAME: STR 53 DETAIL SHEET.DWG

DESIGN	D.L.P.	OSWALT ROAD	LOVE COUNTY
DRAWN	E.L.S. 6/11/14	<b>STRUCTURE 53 DETAILS</b> <b>SHEET 3 OF 3</b> JOB PIECE NO. 25447(04) SHEET NO. B006	
CHECKED	A.F.		
APPROV.	D.E.S.		
SQUAD	C.E.C.		